



GMT MONTHLY MEMBERSHIP PROGRESS REPORT

Results as of: 12/31/2023

Multiple District 13

LOCATION: OHIO

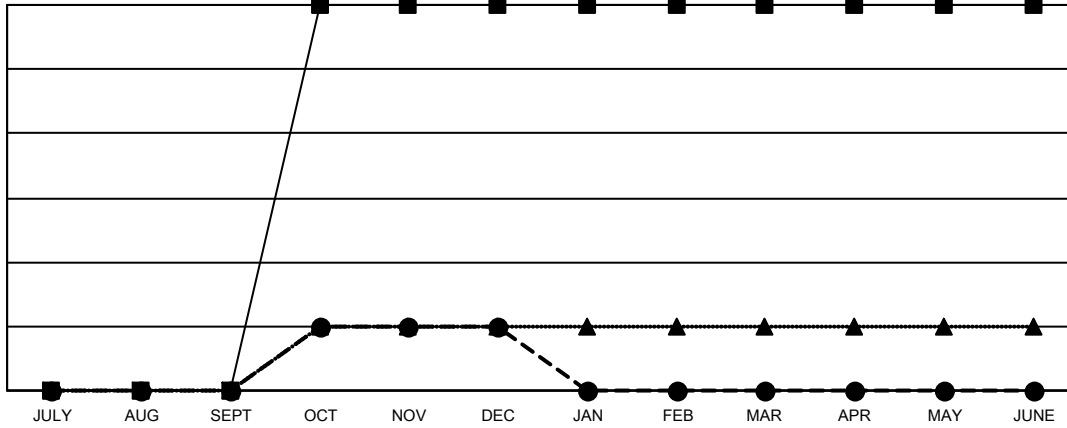
GMT: OPEN

GMT CA 1

Clubs			
RESULTS FOR 2023-2024			
QUARTER	NEW CLUB GOAL	NEW CLUBS	DROPPED CLUBS
JULY/AUG/SEPT	0	0	5
OCT/NOV/DEC	6	1	2
JAN/FEB/MAR	0	0	0
APR/MAY/JUNE	0	0	0

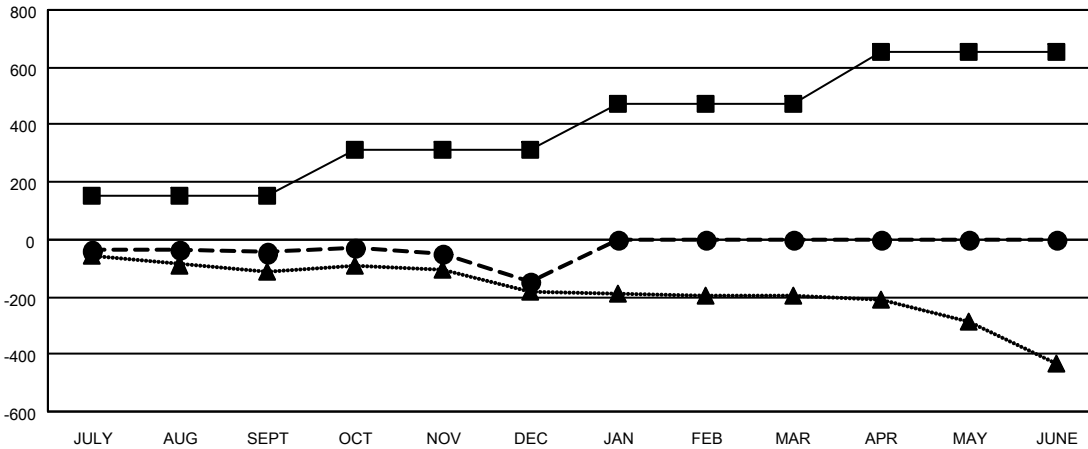
Members			
RESULTS FOR 2023-2024			
QUARTER	MEMBER GROWTH NET GOAL	MEMBER GROWTH ACTUAL	DROPPED MEMBERS ACTUAL (including transfers)
JULY/AUG/SEPT	150	221	236
OCT/NOV/DEC	162	231	317
JAN/FEB/MAR	160	0	0
APR/MAY/JUNE	184	0	0

GOALS AND ACTUAL NEW CLUBS CUMULATIVE



- - CURRENT YEAR GOALS FOR NEW CLUBS
- - CURRENT YEAR ACTUAL NEW CLUBS
- ▲ - LAST YEAR ACTUAL NEW CLUBS

GOALS AND ACTUAL MEMBERS CUMULATIVE



- - MEMBER GROWTH NET GOAL
- - MEMBER GROWTH ACTUAL
- ▲ - LAST YEAR MEMBERSHIP ACTUAL

DROPPED CLUBS: 7	157 CLUBS OF 360 ADDED 1 OR MORE NEW MEMBERS	GENDER DISTRIBUTION
		MALE 6,556 (68.30%)
		FEMALE 3,043 (31.70%)
DROPPED MEMBERS	CLICK HERE FOR CUMULATIVE MEMBERSHIP DATA	TOTAL FAMILY UNIT MEMBERS 2,010
DECEASED 87		FAMILY MEMBERS PAYING HALF DUES 1,022
CLUB CANCELLED 7		
OTHER 459		
TOTAL 553		